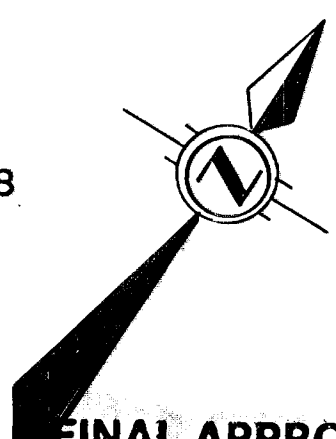


OAKLANDS ESTATES PHASE 3

BEING A SUBDIVISION OF PART OF
 LOTS 7 & 8, BROKEN FRONT CONCESSION
 AND PART OF THE
 ROAD ALLOWANCE OFF OF LOTS 7 & 8
 BROKEN FRONT CONCESSION
 AND PART OF THE
 FORMER WATER LOT IN FRONT OF LOTS 7 & 8
 BROKEN FRONT CONCESSION
 AND PART OF LOT 47, REG'D PLAN N° 642
 FORMERLY IN THE
 TOWNSHIP OF EAST FLAMBOROUGH
 NOW IN THE
CITY OF BURLINGTON
 REGIONAL MUNICIPALITY OF HALTON

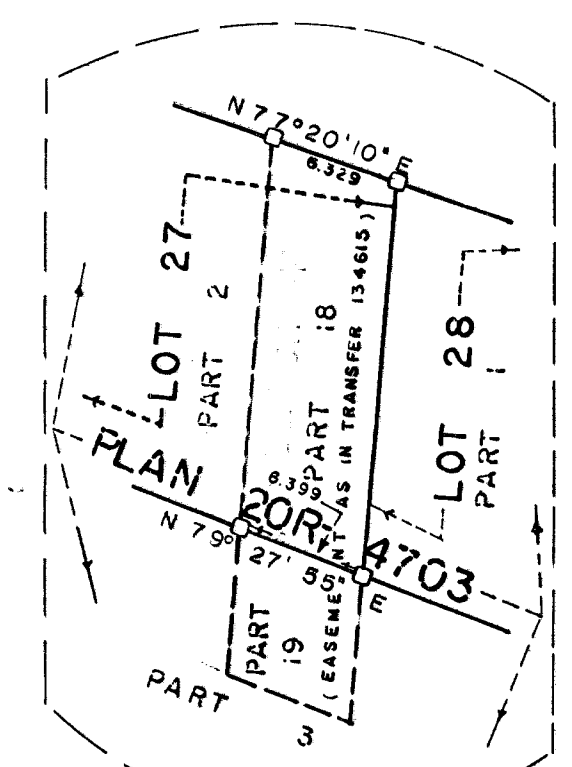


FINAL APPROVAL

Approved under Section 36 of The Planning
 Act, R.S.O. 1980 C379 by the Council/Director
 of Planning and Development of the Regional
 Municipality of Halton

Approved on this 22nd day of July 1982
 R. McLaughlin
 Director of Planning and Development
 (Authority Granted by By-law 82-78)

CURVE DATA					
LOT	RADIUS	ARC	CHORD	CHORD BEARING	ANGLE
1	62.874	28.173	27.938	N 22° 44' 32" E	25° 40' 24"
2	93.000	29.706	29.580	N 24° 38' 13" E	18° 18' 06"
3	93.000	35.000	34.794	N 44° 34' 09" E	21° 33' 46"
4	93.000	9.400	9.398	N 58° 14' 46" E	5° 47' 28"
6	185.000	22.233	22.220	N 64° 34' 35" E	8° 53' 09"
7	185.000	29.293	29.262	N 72° 33' 49" E	9° 04' 20"
8	185.000	7.638	7.638	N 78° 16' 57" E	2° 21' 56"
9	60.960	18.368	18.299	N 55° 19' 55" E	17° 15' 30"
15	16.000	9.958	9.798	N 29° 52' 14" E	35° 33' 32"
16	16.000	16.000	15.342	N 59° 41' 20" E	57° 17' 34"
17	16.000	23.565	21.492	N 69° 27' 57" W	84° 23' 07"
18	16.000	17.000	16.212	N 3° 04' 20" E	60° 52' 38"
18	16.000	13.638	13.229	N 57° 56' 30" E	48° 50' 16"
16.000	9.958	9.798	N 64° 31' 48" E	35° 43' 32"	
24	80.960	0.079	0.079	N 46° 40' 19" E	0° 03' 21"
25	80.960	24.315	24.224	N 55° 21' 30" E	17° 12' 29"
27	57.081	14.008	13.972	N 72° 25' 55" E	14° 03' 56"
28	185.000	27.768	27.735	N 74° 38' 39" E	9° 58' 32"
29	185.000	25.000	24.976	N 65° 28' 56" E	8° 40' 52"
32	73.000	44.169	43.498	N 43° 48' 29" E	34° 40' 02"
33	73.000	14.000	13.980	N 20° 58' 50" E	10° 59' 22"
81.088	7.739	7.739	N 13° 25' 10" E	5° 28' 08"	
60.969	6.318	6.318	N 39° 32' 58" E	5° 56' 16"	



DETAIL 'D'
NOT TO SCALE

OWNER'S CERTIFICATE:

THIS IS TO CERTIFY THAT:
 1. LOTS 1 TO 33, BOTH INCLUSIVE, BLOCKS 34 TO 37, BOTH INCLUSIVE, STREET
 NAMED OAKLANDS PARK COURT, HAVE BEEN LAID OUT IN ACCORDANCE
 WITH MY INSTRUCTION.
 2. THE STREET IS HEREBY DEDICATED AS PUBLIC HIGHWAY.

DATED THE 28th DAY OF SEPT., 1981.
 Julie Kershenfeld
 WITNESS
 William J. Cooke - President,
 J. COOKE DEVELOPMENT CO. LIMITED, OWNER.
 William J. Cooke, Owner.

SURVEYOR'S CERTIFICATE:

I CERTIFY THAT:
 1. THIS SURVEY AND PLAN ARE CORRECT AND IN ACCORDANCE WITH THE
 SURVEYS ACT AND THE LAND TITLES ACT AND THE REGULATIONS MADE
 THEREUNDER.
 2. THE SURVEY WAS COMPLETED ON THE 9th DAY OF OCT., 1981.

OCT. 28, 1981
 DATE
 A.T. McLAREN
 ONTARIO LAND SURVEYOR

TO - 2556 I.D.E.

PLAN 20M - 276

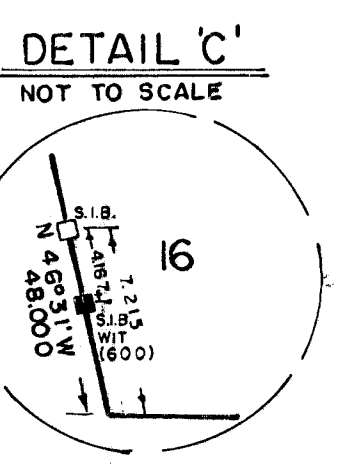
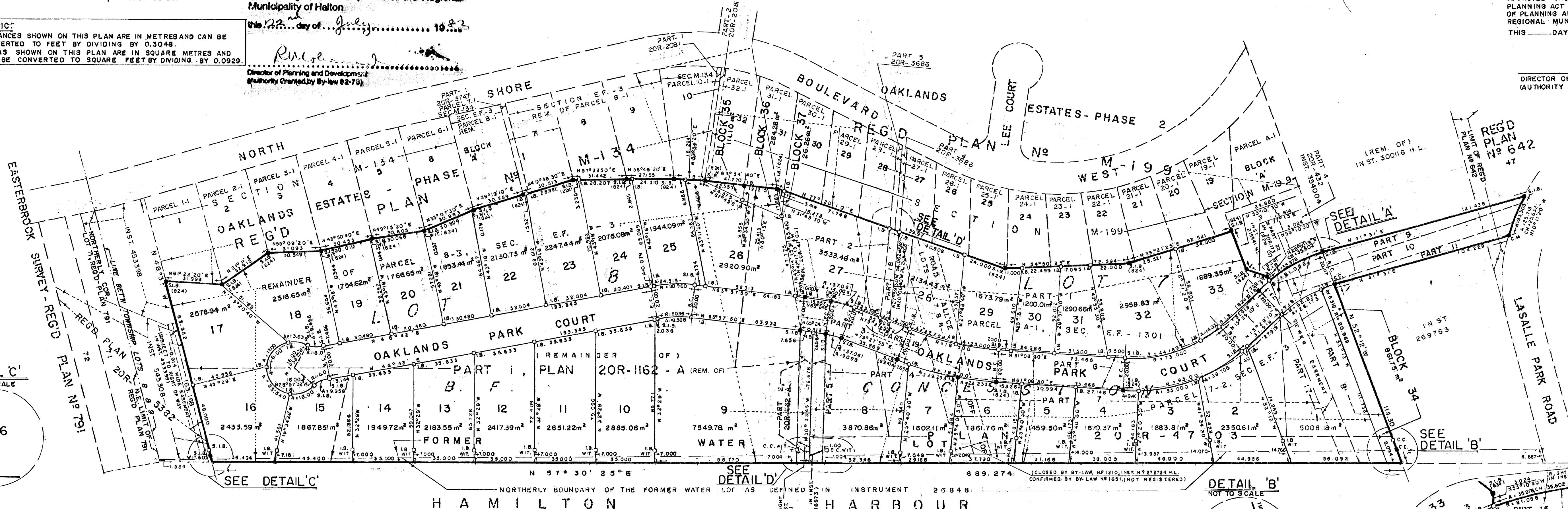
I CERTIFY THAT THIS PLAN 20M-276
 IS REGISTERED IN THE LAND REGISTRY
 OFFICE FOR THE LAND TITLES DIVISION
 OF HALTON AT 9:43 O'CLOCK ON
 THE 20 DAY OF AUG. 1982, AND
 ENTERED IN THE REGISTER FOR PARCEL
 8-1-1-2 SECTION 3-E-2 AND REQUIRED
 CONSENTS AND AFFIDAVITS ARE REGISTERED
 AS PLAN DOCUMENT N° 189672.

APPROVED July 26, 1982
 H.C. N. G. Kline
 ASSISTANT EXAMINER OF SURVEYS

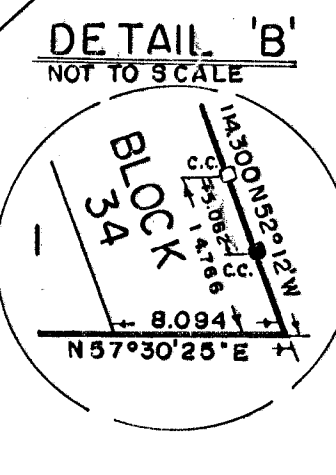
APPROVED UNDER SECTION 33 OF THE
 PLANNING ACT BY THE COUNCIL/DIRECTOR
 OF PLANNING AND DEVELOPMENT OF THE
 REGIONAL MUNICIPALITY OF HALTON.
 THIS DAY OF 1981.

DIRECTOR OF PLANNING AND DEVELOPMENT
 (AUTHORITY GRANTED BY BY-LAW 82-75)

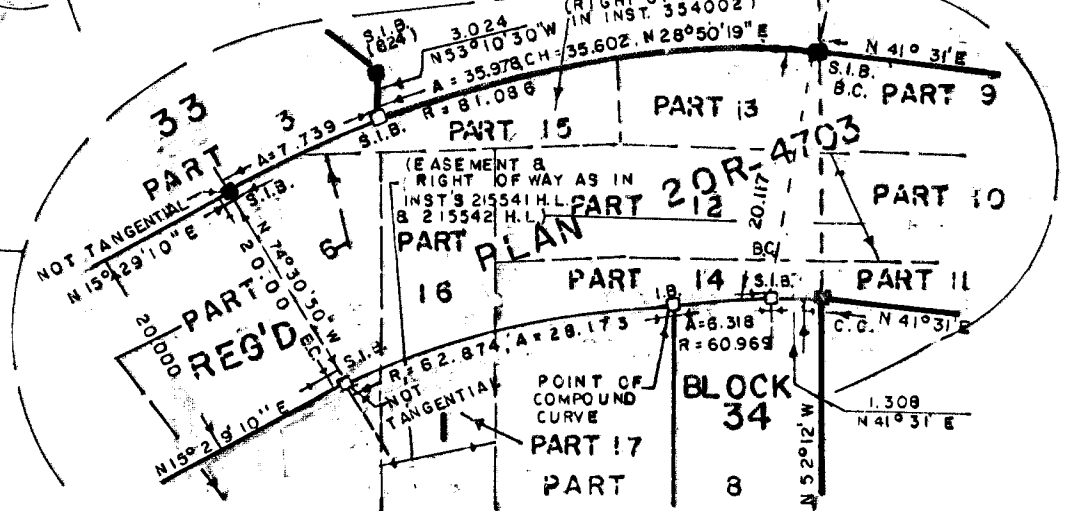
METRIC:
 - DISTANCES SHOWN ON THIS PLAN ARE IN METRES AND CAN BE
 CONVERTED TO FEET BY DIVIDING BY 0.3048.
 - AREAS SHOWN ON THIS PLAN ARE IN SQUARE METRES AND
 CAN BE CONVERTED TO SQUARE FEET BY DIVIDING BY 0.0929.



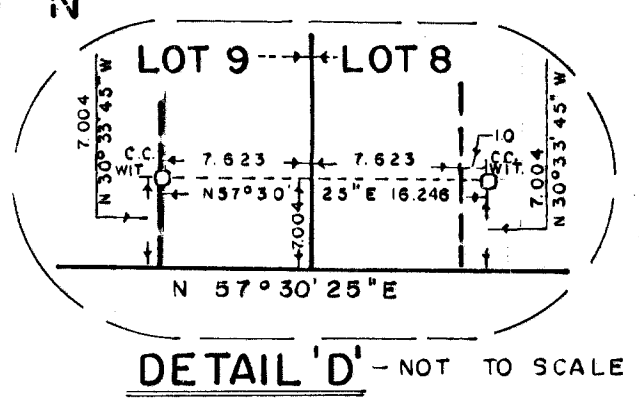
DETAIL 'C'
NOT TO SCALE



DETAIL 'B'
NOT TO SCALE



DETAIL 'A'
NOT TO SCALE



DETAIL 'D' - NOT TO SCALE

A.T. McLAREN LIMITED
 ONTARIO LAND SURVEYOR
 SEPT 18, 1981
 DATE
 A.T. McLAREN, O.L.S.
 25 HUGHSON ST. SOUTH,
 HAMILTON - ONTARIO
 527-0032, 527-8559

LEGEND:
 □ - DENOTES SET MONUMENT.
 ● - DENOTES FOUND MONUMENT.
 - DISTANCES SHOWN ON CURVES ARE ARC DISTANCES.
 - BEARINGS ARE ASYRMONIC AND ARE REFERRED TO THE
 EASTERLY LIMIT OF REG'D PLAN M-199, AS BEING
 N 52° 12' W.
 - TOTAL AREA: 9.6702 Hectares